

# High Quality Equipment for Water & Environment

Packages Solutions



Mechanical Treatment



Turnkey Projects



Sludge Treatment



Supplementary Products After Sales & Service



**OUR AIM - YOUR CONFIDENCE**





**HUBER**  
TECHNOLOGY  
WASTE WATER Solutions

MENA WATER GmbH  
Berching - Germany

MENA-Water is an engineering and manufacturing company flourishing in the field of water and wastewater treatment. Our main objective is conserving the environment through innovative technical solutions and services. Therefore we focus on the supply of high quality, robust and advanced technology to provide our clients worldwide with efficient and cost-effective systems. Our systems feature compact, modular design as well as easy installation and operation conditions. MENA WATER FZC has also acquired ISO 9001:2015, ISO 14001:2015 and ISO 45001:2018 to enhance its capabilities from an integrated management system.

- Packages Solutions
- Mechanical Treatment
- Turnkey Projects
- Sludge Treatment
- Supplementary Products
- After Sales & Service

We engage in close cooperation with our clients, studying their on-site requirements, developing suitable solutions and supplying appropriate system components in accordance with their needs and values. MENA-Water serves its clients worldwide through both our main offices situated in UAE and Germany, along with regional branch and satellite offices and numerous global partners.

**MENA WATER FZC**  
Sharjah - UAE





## Packages Solutions

The containerized package plants are ready made solutions for waste-water, drinking water and sludge treatment. The complete plant is ready mounted as package unit in standard ISO containers for easy transport and quick delivery.

On site installation of our package plants requires only a short time with minimum civil work, piping and cabling. It is easy to extend with additional units and can be moved to any other location. Unique technologies and equipment have been utilized to provide the highest capacity and quality within a small foot-print.

Depending on client's requirement, the plant can be fully automatic, semi-automatic or manually operated.

- MBR Sewage Plant
- MBBR Sewage Plant
- Drinking Water Plant
- Reverse Osmosis Plant
- Sludge Dewatering
- Industrial Effluent
- Ultra Filtration
- SBR System

## Mechanical Treatment

In this first stage of wastewater treatment process, screens and other separation components are used to remove floating and settleable coarse material from the raw water. Primary cleaning is the basis to prevent downstream equipment from clogging and damages. Depending on client's requirement, the plant can be fully automatic, semi-automatic or manually operated.

- Multi Rake Bar Screen
- Perforated Belt Screen
- Grab Bar Screen
- Inclined Screw Screen
- Vertical Screw Screen
- Basket Screen
- Storm Water Screen
- Wash Press
- Circular Grit Trap (Vortex)
- Longitudinal Grit Trap
- Grit Classifier
- Grit Washer
- Packaged Inlet Work
- Drum Screen

## Turnkey Projects

Infrastructure is the backbone of every civilization and among this the drinking water and waste water is an essential topic.

Many towns are fast growing and the water plants previously situated at the town borders will be found now in a dense populated area. After a long time of operation neither the quality nor the quantity of the treatment can be achieved any more. Respond to this growing demand is limited due to the lack of site space. But the networks are designed with this plant locations and building new plants at the town extensions needs a new network architecture and new infrastructure. This task will be costly and time consuming. MENA-Water is supporting its clients to find advanced solutions by upgrading and rehabilitating of existing, outdated plants.

- Industrial Wastewater Treatment
- Municipal Wastewater Treatment
- Drink Water Treatment
- Rehabilitation & Upgrade
- Automation & Process Control systems





## Sludge Treatment

Sludge is produced during the treatment of water. This is inherently so because a primary aim of water treatment is removing solids. In addition, soluble organic substances are converted to bacterial cells and the resulting sludge is removed from the wastewater. These material must be treated through thickening, dewatering and/or drying to be disposed of in safe and effective way.

- Belt Filter Press
- Screw Press
- Centrifuge
- Dewatering Bags
- Belt Thickener
- Screw Thickener
- Mobile Sludge Dewatering
- Polymer Preparation Unit
- Sludge Dryer
- Sludge to energy process
- Sludge Handling & Silos



## Supplementary Products

MENA-Water is handling with all kind of water treatment technology, therefore we also offer services and products around water treatment equipment. Our program is including all steps of the treatment process and all needed equipment.

The supplementary products are part of the treatment technologies and are elementary included in some process steps. They also can be used as single additional treatment steps.



- Package plants equipment's service, maintenance and replacement
- Manual and basket screens
- Penstocks
- Equipments in Stainless Steel
- Odor control
- Rectangular Sludge scraper systems for water and wastewater treatment plants



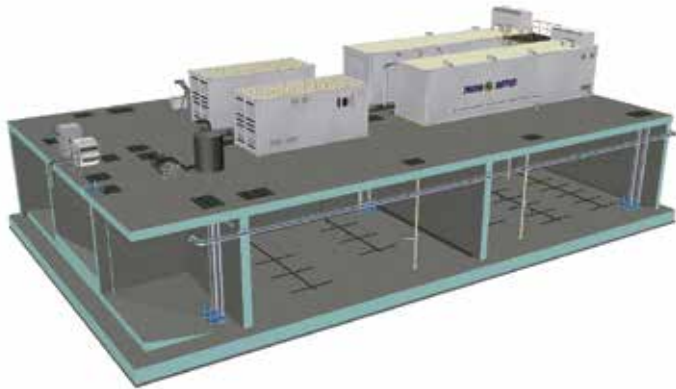
## After Sales & Service

Both MENA-Water and HUBER are extremely proud to have dedicated After Sales Service and Support team(s) which are at the disposal of our customers around the clock; all around the world. Our Global Service helps us to continuously maintain the high quality of both our products and ongoing performance that our customers have rightly come to expect.



- Maintenance Services
- Spare parts
- Repair
- Installation & Commissioning
- Plant Rehabilitation
- Remote Service Support
- Consultancy Services
- Operation & Maintenance contracts
- Training



**Selale University STP (2 MBR Packages) - Ethiopia**Plant Capacity: 2000 m<sup>3</sup>/day**Marine Terminal STP (MBBR Technology) - Sudan**Plant Capacity: 50 m<sup>3</sup>/day (500 PE)**Fiji Water (MBR Package Plant) - Fiji**Plant Capacity: 83 m<sup>3</sup>/day**Al Badayer Resort WWTP - Sharja, UAE**Plant Capacity: 23 m<sup>3</sup>/day**Ajman Sewerage Bio-refinery – Sludge to Energy Facility - Ajman, UAE**Gasholder: 3400m<sup>3</sup>Gas flare: 1300m<sup>3</sup>/h

**Bako Potable Water Treatment Plant**  
40,000 People, Ethiopia



**Durrat Al Bahrain STP/MBR**  
10,000 People, Bahrain



**Marafiq Sludge Dewatering - 4 Mobile Plants**  
Jubail - Saudi Arabia



**Refurbishment of Gasholder at Warsan STP**  
4000 m<sup>3</sup>/day, Dubai - United Arab Emirates



**Ma'mir STP - Inlet Headworks with fine screen, grit & grease trap followed by membrane screen**  
2.215 m<sup>3</sup>/day, Bahrain





**Khartoum North Potable Water Plant / Rehabilitation and Upgrade**

Serving upto 4 million people, Khartoum - Sudan

**Al Ain Poultry Slaughtering & Processing, Wastewater Treatment Plant**

400 m<sup>3</sup>/day, Al Ain – United Arab Emirates





OUR AIM - YOUR CONFIDENCE



## MENA WATER FZC

P.O. Box: 120881, D3-11, SAIF Zone

Sharjah, United Arab Emirates

Tel.: +971 6 5575507

Fax: +971 6 5575508

E-Mail: [info@mena-water.com](mailto:info@mena-water.com)

[www.mena-water.com](http://www.mena-water.com)

## MENA WATER GmbH

Industriepark Erasbach A1

92334 Berching, Germany

Tel.: +49 8462 201 390

Fax: +49 8462 201 239

E-Mail: [info@mena-water.de](mailto:info@mena-water.de)

[www.mena-water.de](http://www.mena-water.de)



Member of

**German Water  
Partnership**



Member of **HUBER** Group  
**TECHNOLOGY**  
WASTE WATER Solutions